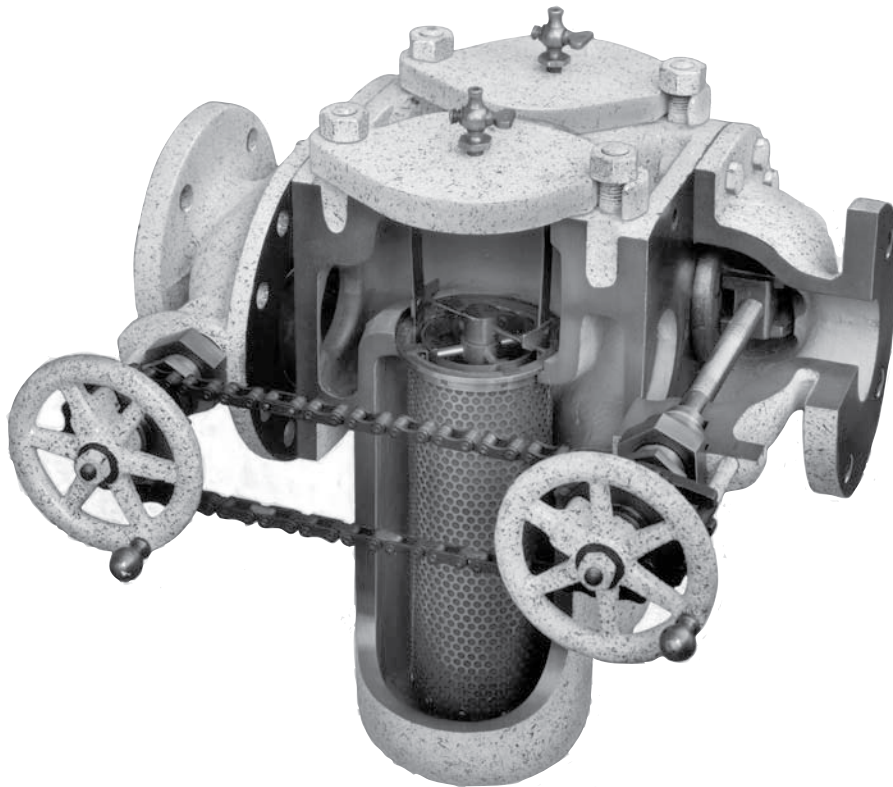


# Tate Andale Model VL and VH Twin Basket Strainers

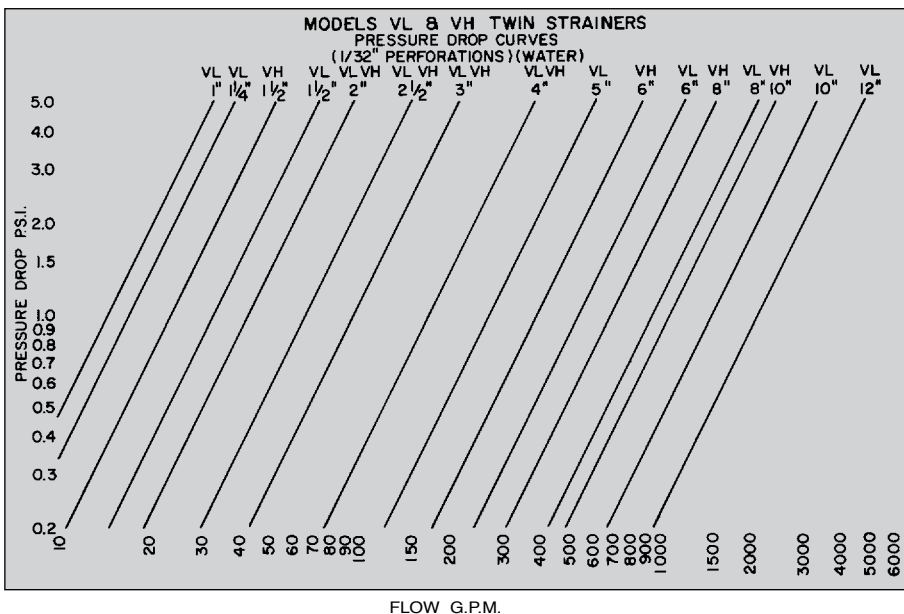
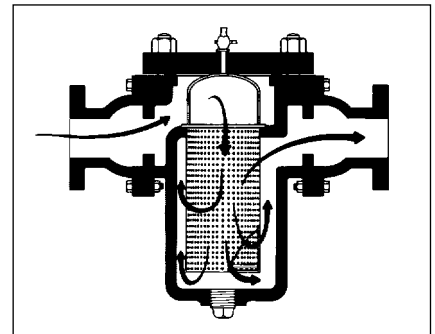
Where viscosity and fine mesh combine to make maximum surface area desirable—  
The “VL” has it all!



## Description

The Model **VL** cast duplex strainer is the heavy duty strainer designed for viscous liquid. Its design incorporates extra large baskets with straining ratios up to 14:1. Optional wedgewire baskets provide even greater open area, higher straining ratios and greater durability. The Model **VL** is designed with one set of moving parts—sliding gate valves that divert liquid flow from one basket chamber to the other. What’s more, because the gate valves have wedge seating (wedged into the closed position), the valve does not contact the strainer body when switching basket chambers. Instead, it only makes contact in the closed position, thereby reducing wear. The walls of the Model **VL** are also the thickest available, ensuring longevity and durability. Maximum straining efficiency, plus decades of service, make the **VL** the high performance choice.

## Standard Features



- Disc valves divert the flow from one basket to the other permitting removal of the out-of-service basket for cleaning. While the fluid is flowing through the clean basket, the access cover of the other chamber may be opened and the clogged basket removed.
- Although ideal for the handling of any commercial liquids, including water, the Model **VL** strainers were especially designed for the removal of foreign matter from oils, greases, tars, glues, syrup, fish oil, and similar viscous fluids. The extra large baskets and unrestricted fluid passages insure maximum time between cleanings without impairment of straining efficiency.
- The large baskets (straining ratios from 8 to 1 to 14 to 1) make this strainer ideally suitable for viscous liquid or sub-atmospheric applications.
- The “**VL**” strainer has sliding gate valves with wedge seating. This means that the sealing surface of the valve disc and the strainer body do not come in contact while the disc is being switched from one basket to the other. This extends the usable life of the strainer and reduces its overall cost.
- The strainer includes steel plate access covers suitable for rough handling and maximum durability.
- The valve position indicators are in plain view to enable the operator to quickly determine valve position. This means that the likelihood of operator error in switching the valves, with potentially disastrous results, is significantly reduced with the “**VL**”.
- Vent valves on doors and equalizing and drain connections on each chamber.
- Positive seating of bail type basket eliminates debris bypass. Suitable for

lining with mesh sizes down to 200 mesh.

### Standard Materials

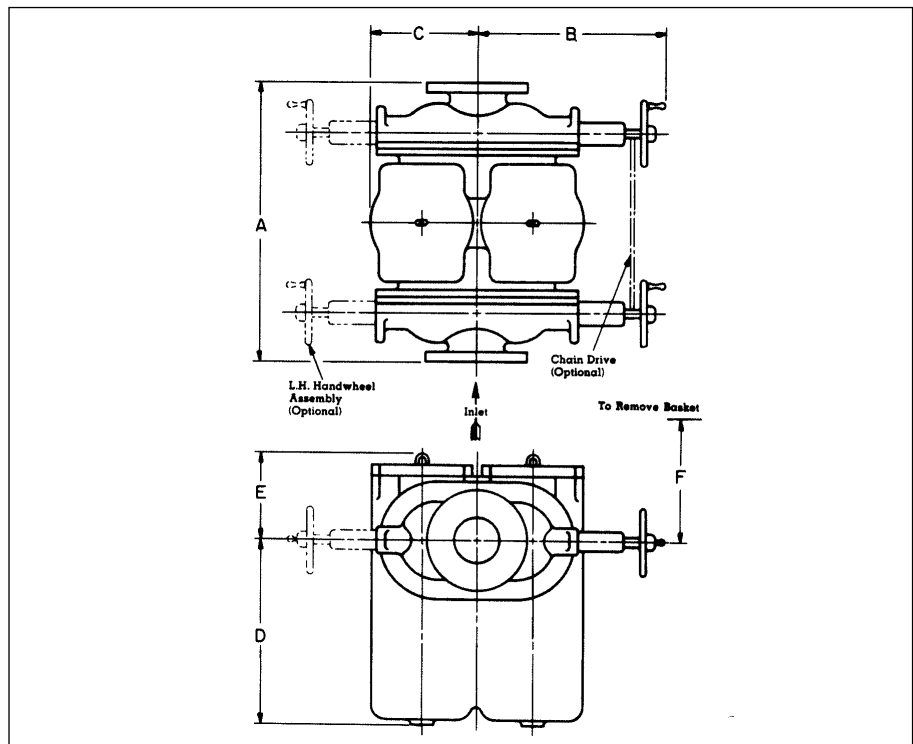
- Body and valve housings (VL) . . . Cast iron
- Body and valve housings (VH) . . . High-tensile cast iron or cast steel
- Handwheels . . . . . Cast iron
- Access covers . . . Steel plate
- Valve discs— to 6" size. . . . . Bronze
- Valve discs— 6" and up. . . . . Cast iron or steel with bronze rings
- Baskets . . . . . 304 Stainless steel

- Replaceable wedge shoes on 6" and larger sizes
- Right or left hand assembly
- Threaded connections through 2"; flanged connections on larger sizes

### Optional Features

- Chain drive (handwheels interlocked)
- Wire cloth lined baskets
- Wellscreen baskets
- Higher design pressures
- Magnet assemblies
- Equalizing lines and valves
- Zinc anodes for salt water
- Baskets of 316 Stainless steel or Monel
- Other materials of construction available upon request

### Standard Features



### Model VL Dimensions (Approx.) 125 PSIG

\*Threaded Connections

SIZE (Inlet Dia.)	1"*	1¼"*	1½"*	2"*	2½"	3"	4"	5"	6"	8"	10"	12"
<b>A</b>	10	10	17	17	17½	20½	25	28½	36¾	44½	57¼	65
<b>B</b>	7½	7½	11⅙	11⅙	12⅝	13⅙	18⅝	20½	23	26	28½	34
<b>C</b>	3⅜	3⅜	5⅜	5⅜	6¾	7¼	9¾	10½	16⅞	19⅙	21¼	26½
<b>D</b>	5⅙	7⅙	6¾	9½	11½	13¼	16¾	21¼	28¼	30¼	47	54½
<b>E</b>	4⅙	4⅙	6	6	6⅙	7¾	7¾	9¼	10¾	11¾	14¾	21
<b>F</b>	9	11½	13½	16½	18½	21½	25¾	32½	40½	44½	50½	75
<b>Weight (lbs)</b>	55	60	180	200	230	325	500	740	1600	2500	3750	5000