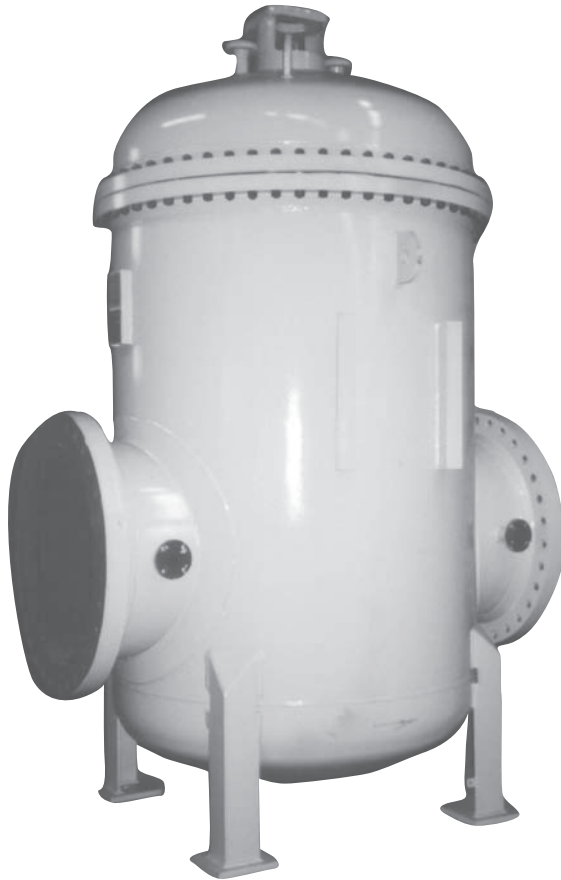


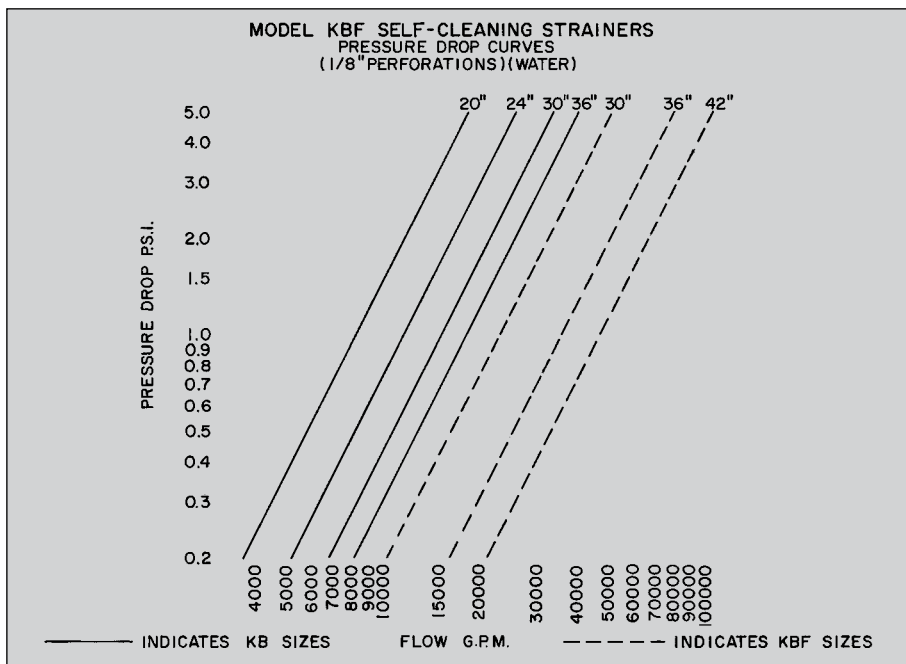
Tate Andale Model KBF Self-Cleaning Strainer

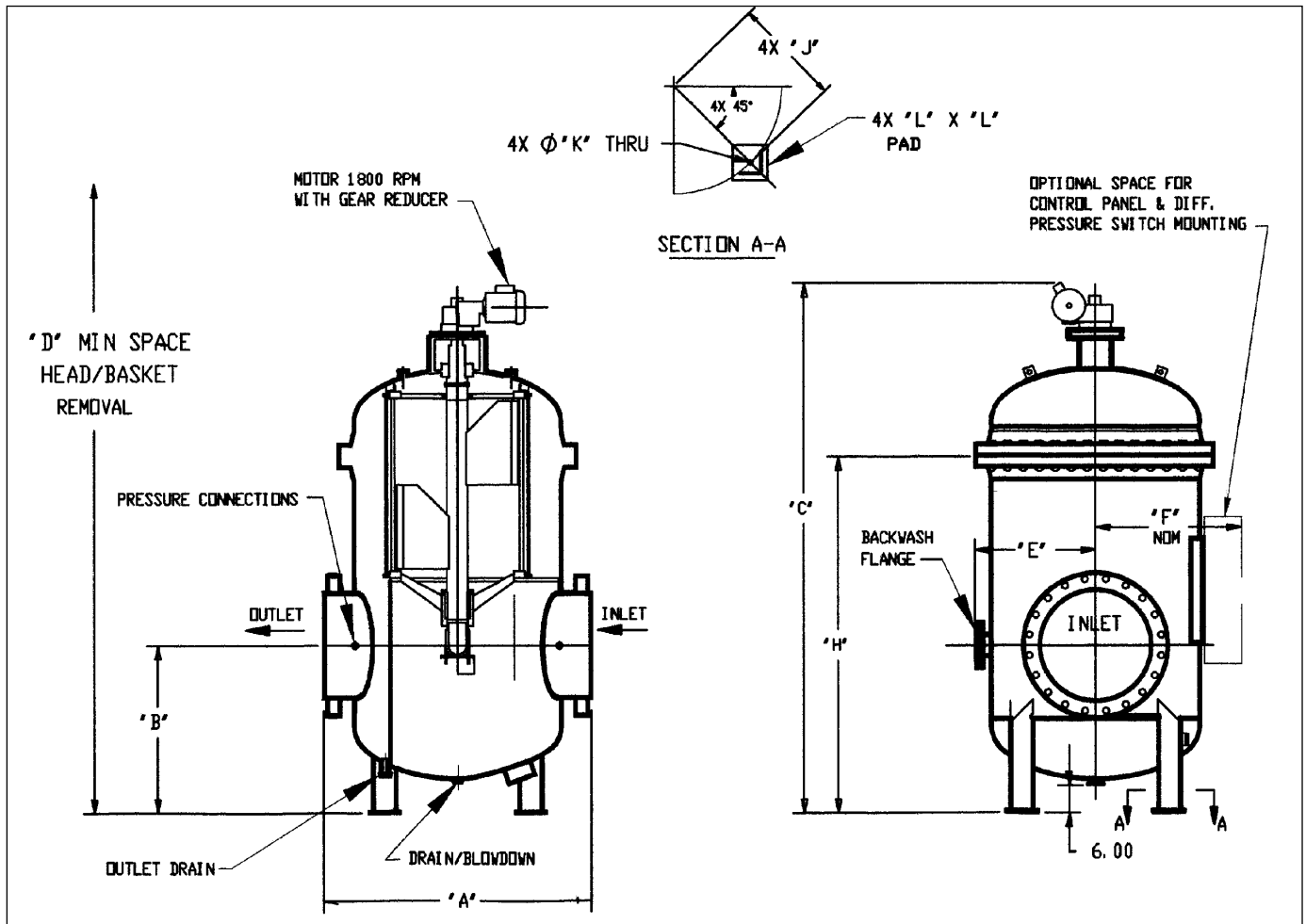
Where customer needs require custom designs—
The “KBF” is the answer.



Description

The Model **KBF** is a truly customizable fabricated self-cleaning strainer designed for continuous backflush operation. Featuring a fabricated backwash arm and a single, replaceable element wedgewire basket—both of stainless steel construction—the Model **KBF** is designed to be unattended for extended periods of time. The large amount of open area allows intermittent backflush operation, thereby minimizing both operating costs and backwash effluent. The wedgewire element features a reverse groove design that prevents lodging of debris in the element, and creates a vortex during backflush for a more efficient backflush operation. The Model **KBF** can be constructed from a variety of materials—from carbon steel to stainless steel to exotic alloys—or can be coated internally with fusion bonded epoxy finish, allowing it to handle any fluid. For a truly customizable strainer that can be designed for any application or budget, the **KBF** is the only choice.





Model KBF Dimensions (Approx.) 150 PSIG

Flange (Inlet/Outlet)	20 ANSI	24 ANSI	30 ANSI	36 ANSI	42 ANSI
Weight Cover	650 lb.	950 lb.	1690 lb.	1855 lb.	2900 lb.
Weight Full	5700 lb.	8900 lb.	16830 lb.	23500 lb.	38300 lb.
Weight Empty	3500 lb.	4700 lb.	8000 lb.	10400 lb.	17000 lb.
Motor, H.P.	1/2	1/2	1/2	1/2	1/2
"L"	8	8	10	10	10
"K"	1.13	1.13	1.38	1.38	1.38
"J"	19	23	30	33	39
"H"	67	77	87	104	120
"F"	28	32	39	42	48
"E"	23	27	34	39	45
"D" FROM FLOOR	124	140	164	189	214
"C" OAH	100	114	130	152	172
"B"	34	37	43.5	48	55
"A"	50	58	76	90	100
STRAINER SIZE	20"	24"	30"	36"	42"