

Tate Andale Model KB Self-Cleaning Strainer

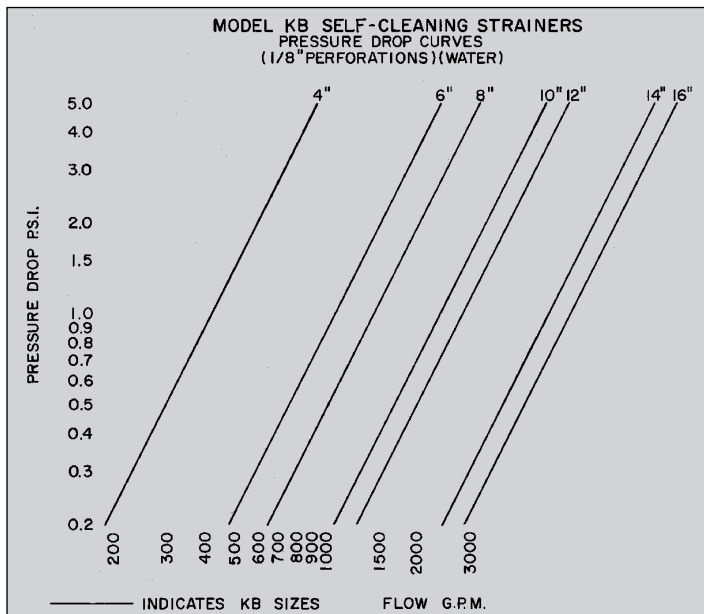
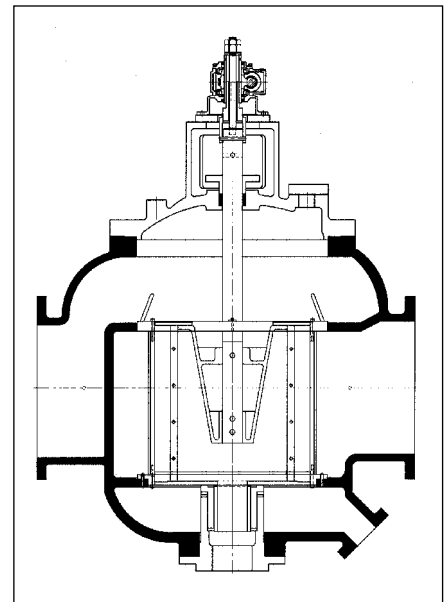
**Where reliability and durability are a necessity and not an option—
The “KB” is the answer.**



Description

The Model **KB** is a cast iron continuous backflushing, self-cleaning strainer designed with an oversized body to accommodate higher flow rates. Featuring a cast ductile iron backwash arm rotated by an electric motor, the Model **KB** is designed for installations which will be unattended for an extended period of time. Combined with a single piece stainless steel wedgewire straining element, the oversized body produces a phenomenally high straining ratio. Configuration for intermittent automatic backflush also reduces backwash effluent, and allows long periods between backflushing. As a result, the Model **KB** is far less costly to operate. The wedgewire element features a reverse groove design that prevents lodging of debris in the element, and creates a vortex during backflush for a more efficient backflush operation. For high flow rates and unsurpassed longevity, the Model **KB** is the top self-cleaning strainer in the industry.

Standard Materials



Body, covers,
gland.....Cast iron
Cover.....Steel plate
Rotating cleaning
element.....Ductile iron with
natural rubber
stock facing
Rotating shaft.....304 Stainless steel
Straining elements.....304 Stainless steel

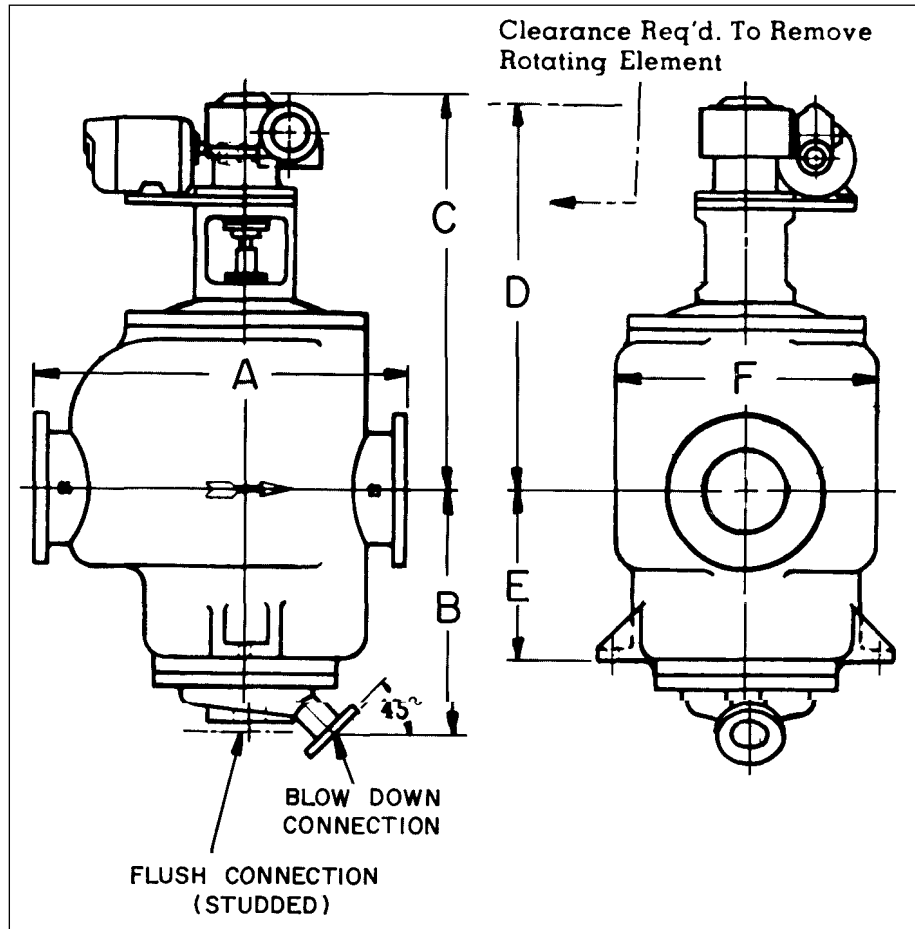
- Automatic intermittent flushing control to conserve backflushing fluid
- Suction service units available
- Air, electric, or hydraulic operated flushing valves

- Sequential controls for multiple units
- Higher design pressures available

Standard Features

- Continuous backflushing
- Replaceable straining elements
- C face mounting gear box drive motor
- Full rotation of cleaning element
- Water-lubricated rubber lower bearing
- Light rotating element
- 10" and larger sizes have hydraulically balanced rotating elements
- Replaceable lower bearing (without removing shaft)
- In-line nozzles
- Large blow-down connection

Optional Features



Model KB Dimensions (Approx.) 125 PSIG

| SIZE (Inlet Dia.) | 4" | 6" | 8" | 10" | 12" | 14" | 16" |
|----------------------|-----|------|------|------|------|------|------|
| A | 23 | 32 | 32¼ | 42½ | 42¾ | 57½ | 57¾ |
| B | 9⅞ | 14⅞ | 21⅝ | 20⅞ | 29⅝ | 27½ | 37 |
| C | 30⅞ | 34½ | 34½ | 42¼ | 42¼ | 52 | 52 |
| D | 38 | 57¾ | 63¾ | 76 | 86 | 84 | 94 |
| E | — | 8⅞ | 15⅞ | 12⅞ | 21⅝ | 17¼ | 26¾ |
| F | 15¼ | 23 | 23 | 29½ | 29½ | 43 | 43 |
| Motor H.P. | ½ | ½ | ½ | ½ | ½ | ½ | ½ |
| Weight (lbs.) | 939 | 1725 | 1965 | 3238 | 3476 | 7300 | 7900 |