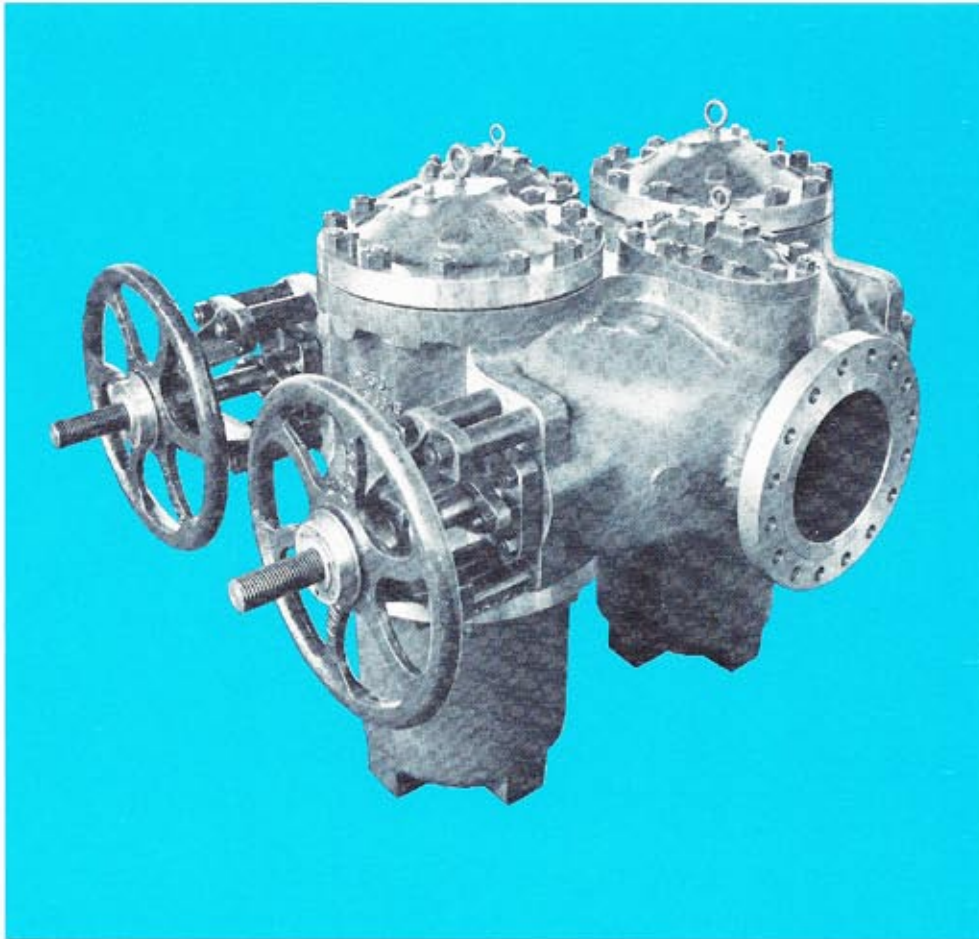


# Tate Andale Model 101-1 Twin Basket Strainer

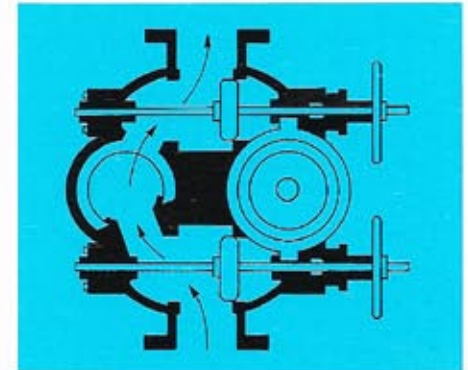


## Description

With a Tate Andale Model 101-1 Strainer, flow is quickly diverted from the clogged basket to the clean one by operating two globe-type valves which control fluid flow into and out of the strainer. The dirty basket can be easily removed, cleaned and replaced. When simultaneous operation of both flow diversion valves is desired to prevent accidental flow shut-off, an optional chain interlock is a useful accessory.

Model 101-1 Strainers are available in sizes 2" thru 12" for system pressure up to 350 psig. The basket access covers are bolted type.

The baskets are available in a wide selection of perforated and mesh sizes.



## Typical Strainer Specification

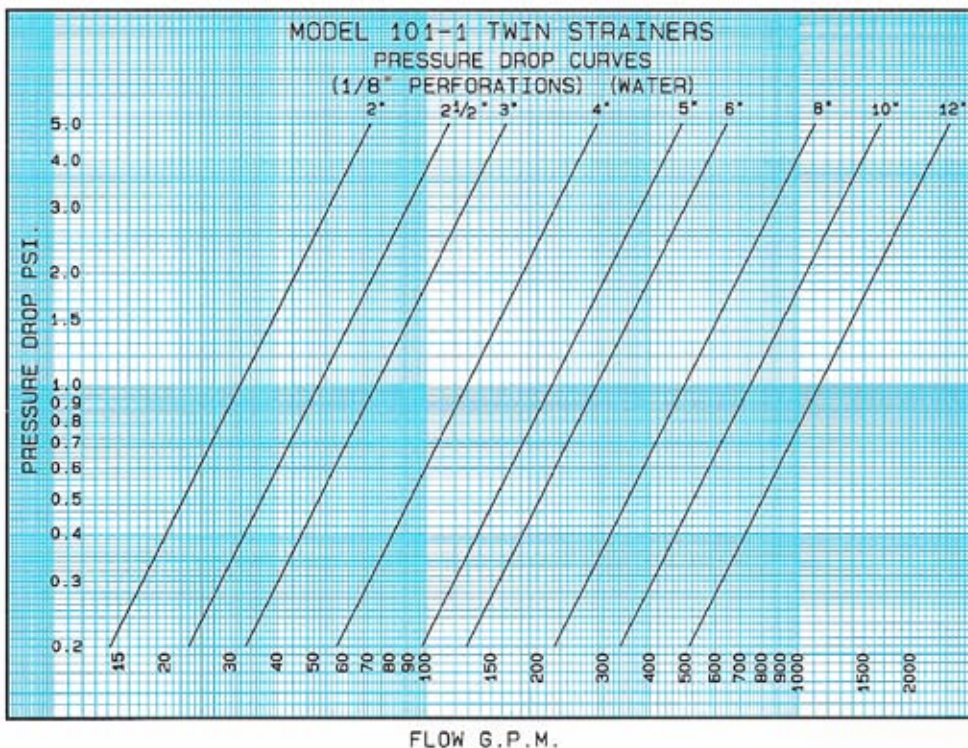
The strainer shall have globe-type valves with tapered, metal-to-metal seats with twin baskets, capable of handling \_\_\_\_\_ (fluid) at a flow rate of \_\_\_\_\_ GPM with an approximate pressure drop (clean) of \_\_\_\_\_ PSIG. The strainer shall be Model 101-1 as manufactured by Tate Andale Inc., and suitable for a working pressure of \_\_\_\_\_ PSI and working temperature of \_\_\_\_\_ °F.

The strainer body shall be of cast steel construction with \_\_\_\_\_" flanged inlet and outlet connections and shall have bolted type basket access covers.

The globe valves shall be precision machined and fitted to the body.

Visual indication of valve position shall be provided by rising valve stems with external, acme threads which do not come in contact with the liquid at any time.

The two strainer baskets shall be of 304 stainless steel construction with \_\_\_\_\_ inch diameter perforated openings (or a \_\_\_\_\_ mesh liner).





## Standard Materials

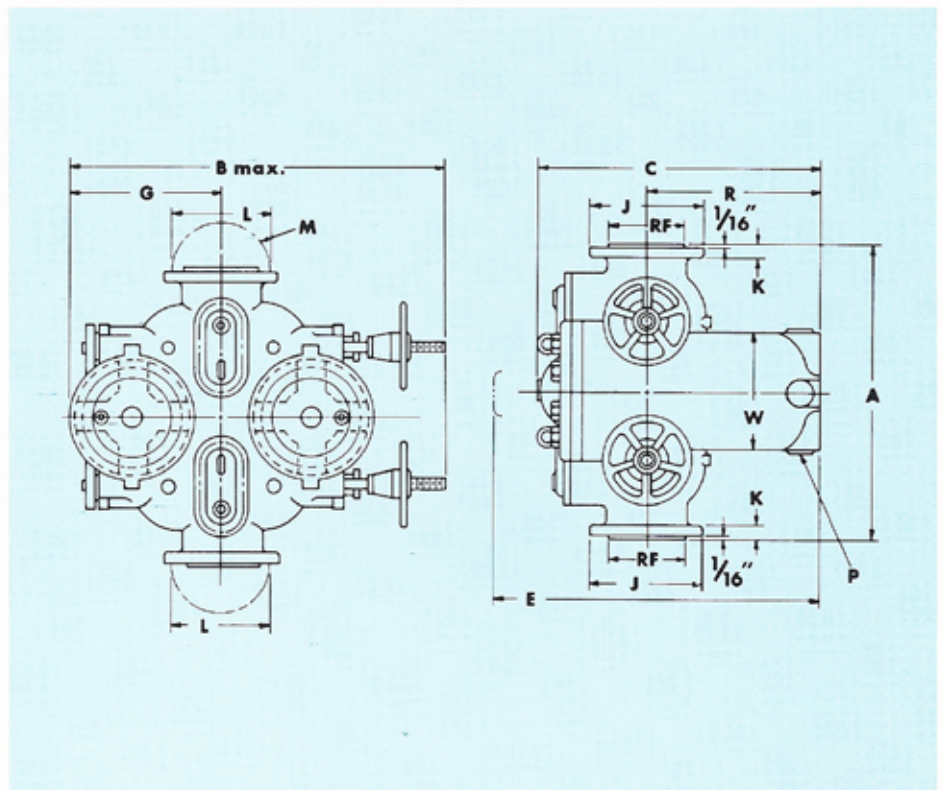
Body, Covers ..... Cast Steel  
 Discs  
 Up to 6" ..... Bronze or Steel  
 8" & larger ..... Cast Iron, Cast Steel  
 Seats ..... Bronze or Steel  
 Spindles ..... Bronze or Stainless Steel  
 Basket ..... 304 Stainless Steel  
 Basket  
 Supports ..... Cast Iron, Cast Steel

## Standard Features

- Body, covers of cast iron or cast steel with globe-type valves (discs) of the same materials.
- Rising valve stems (which give visual indication of valve position) with external acme threads that do not come in contact with the liquid.
- Side inlet baskets with carefully fitted supports to minimize particle by-pass and pressure drop.
- Right or left hand assemblies.
- Equalizing and drain connections provided on each chamber (pipe fittings and valves by purchaser).

## Optional Features

- Higher design pressures
- Bronze discs—8" and larger
- Chain drive (handwheels interlocked)
- Equalizing lines and valves
- Baskets of 316 Stainless Steel or Monel
- Wire cloth lined baskets
- Wellscreen baskets
- Magnet assemblies
- Zinc anodes for salt water
- Cast iron body and covers suitable to 250 PSIG
- Ductile iron body and covers suitable to 300 PSIG



## Model 101-1 Dimensions (Approx.) 350 PSIG

SIZE	A	B	C	E	G	J	K	L	M*	P	R	RF	W	NET WT. LBS.
2"	19.50	26	14.75	24	9.63	6.50	.88	5	8-¾	½	8.5	3.63	7.25	350
2½"	22.75	29	22.88	34	10.38	7.50	1	5.88	8-⅞	½	12.50	4.13	8.38	560
3"	22.75	29	22.88	34	10.38	8.25	1.13	6.63	8-⅞	½	12.50	5	8.38	600
4"	28.25	34	29.25	46	13.13	10	1.25	7.88	8-⅞	½	17.25	6.19	9.88	950
5"	27.88	37	25	39	14.25	11	1.38	9.25	8-⅞	¾	13.31	7.31	10.50	1300
6"	35	41	38.5	62	17.13	12.5	1.44	10.63	12-⅞	¾	24	8.50	13.25	1600
8"	44.25	57	52	86	20.5	15	1.63	13	12-1	¾	34.5	10.63	13	3400
10"	45	64	54	88	26.25	17.5	1.88	15.25	16-⅞	¾	30	12.75	16.75	3500
12"	56	73	57	96	27.75	20.5	2	17.75	16-1¼	1	35	15	19	6500

\*Number of bolts and diameter of holes.