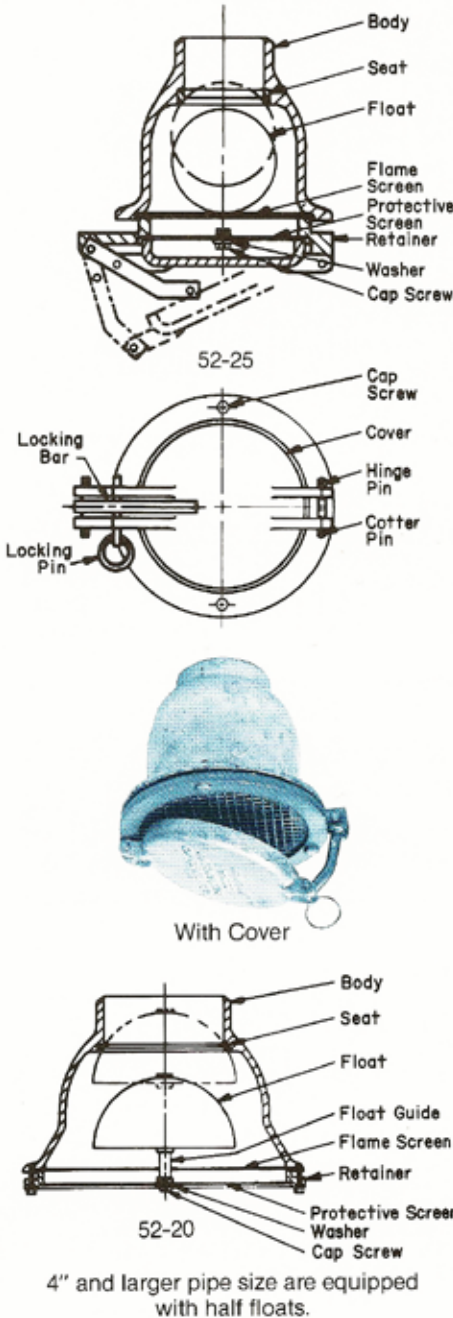


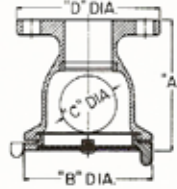
Tate Andale Tank Vent Check Valves

These vent check valves were designed for use where space for mounting is limited and where installation would be difficult because of limited access. Because of their compact design these vents provide lower initial cost as well as lower installation cost. TATE Figure Nos. 52-20 (without cover) and 52-25 (with cover) conform to U.S. Coast Guard requirements including flame screens, floats for check, and open area through valve and screens. These vents are available in Cast Steel, Semi-Steel, and Bronze.

When ordering parts: Specify size, figure no., and body material.



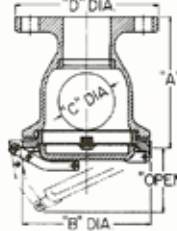
FLANGED 52-20F



Reference Dimensions Inches — 52-20F

Size	1 1/2	2	2 1/2	3	3 1/2	4	5	6	8	10	12
A	4 13/16	5 1/2	6 3/4	7	7 13/16	8 13/16	8 3/4	9 1/2	11 1/8	14 1/2	17
B	4 3/4	5 3/8	6 1/4	7	7 3/4	9 1/2	11	14	17	21 3/8	24
C	2	2 1/2	3	3 1/2	4	4 1/2	6	7	9	12	14
D	5	6	7	7 1/2	8 1/2	9	10	11	13 1/2	16	19
*WGT.	8 1/2	11	16	19	25	33	44	59 1/2	84 1/2	159 1/2	278

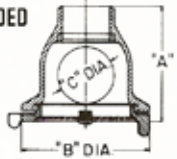
FLANGED 52-25F



Reference Dimensions Inches — 52-25F

Size	1 1/2	2	2 1/2	3	3 1/2	4	5	6	8	10	12
A	4 13/16	5 1/2	6 3/4	7	7 13/16	8 13/16	8 3/4	9 1/2	11 1/8	14 1/2	17
B	4 3/4	5 3/8	6 1/4	7	7 3/4	9 1/2	11	14	17	21 3/8	24
C	2	2 1/2	3	3 1/2	4	4 1/2	6	7	9	12	14
D	5	6	7	7 1/2	8 1/2	9	10	11	13 1/2	16	19
Open	2 1/2	2 1/2	2 1/2	2 1/2	2 1/2	4 5/8	4 3/4	6 3/4	6 3/4	6 3/4	6 3/4
*WGT.	9 1/2	12 1/2	18	21	30	36	49	71 1/2	103	185	345

BUTT WELDED 52-20V (Steel Only)



Reference Dimensions Inches — 52-20V

Size	1 1/2	2	2 1/2	3	3 1/2	4	5	6	8	10	12
A	4 5/8	4 7/8	5 5/8	6 1/2	7 1/4	6 1/2	7 3/4	8 3/4	10 1/2	13 3/4	16 1/2
B	4 3/4	5 3/8	6 1/4	7	7 3/4	9 1/2	11	14	17	21 3/8	24
C	2	2 1/2	3	3 1/2	4	4 1/2	6	7	9	12	14
*WGT.	4 1/2	6 1/4	7 1/2	10 1/2	13	16	28	33 1/2	54 1/2	116 1/2	214

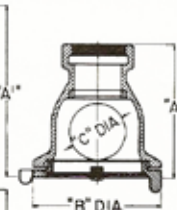
BUTT WELDED 52-25V (Steel Only)



Reference Dimensions Inches — 52-25V

Size	1 1/2	2	2 1/2	3	3 1/2	4	5	6	8	10	12
A	4 5/8	4 7/8	5 5/8	6 1/2	7 1/4	6 1/2	7 3/4	8 3/4	10 1/2	13 3/4	16 1/2
B	4 3/4	5 3/8	6 1/4	7	7 3/4	9 1/2	11	14	17	21 3/8	24
C	2	2 1/2	3	3 1/2	4	4 1/2	6	7	9	12	14
Open	2 1/2	2 1/2	2 1/2	2 1/2	2 1/2	4 5/8	4 3/4	6 3/4	6 3/4	6 3/4	6 3/4
*WGT.	5 1/2	8	9 1/2	13	16	19	34	45 1/2	73	142	281

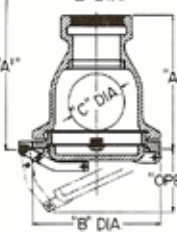
IPS THREADED 52-20T



Reference Dimensions Inches — 52-20T & 52-20TV

Size	1 1/2	2	2 1/2	3	3 1/2	4	5	6	8	10	12
A	4 3/8	5 5/8	6 5/8	7 1/2	8 1/4	7 1/4	8 3/4	10	11 1/2	15	17 3/8
1A	7 3/16	7 7/8	8 5/8	9 1/2	10 3/8	9 1/8	11 3/8	12 3/4	15 1/8	18 1/2	20 5/8
B	4 3/4	5 3/8	6 1/4	7	7 3/4	9 1/2	11	14	17	21 3/8	24
C	2	2 1/2	3	3 1/2	4	4 1/2	6	7	9	12	14
*WGT.	5 1/2	7	9	12	16	20	33	41	64	130	235

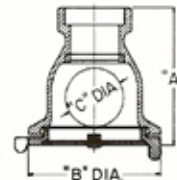
IPS THREADED 52-25T



Reference Dimensions Inches — 52-25T & 52-25TV

Size	1 1/2	2	2 1/2	3	3 1/2	4	5	6	8	10	12
A	4 3/8	5 5/8	6 5/8	7 1/2	8 1/4	7 1/4	8 3/4	10	11 1/2	15	17 3/8
1A	7 3/16	7 7/8	8 5/8	9 1/2	10 3/8	9 1/8	11 3/8	12 3/4	15 1/8	18 1/2	20 5/8
B	4 3/4	5 3/8	6 1/4	7	7 3/4	9 1/2	11	14	17	21 3/8	24
C	2	2 1/2	3	3 1/2	4	4 1/2	6	7	9	12	14
Open	2 1/2	2 1/2	2 1/2	2 1/2	2 1/2	4 5/8	4 3/4	6 3/4	6 3/4	6 3/4	6 3/4
*WGT.	6 1/2	8 1/2	11	15 1/2	19	23	39	53	82 1/2	156	302

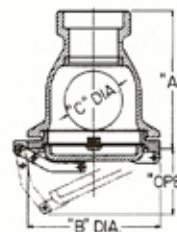
SIL BRAZED 52-20S



Reference Dimensions Inches — 52-20S

Size	1 1/2	2	2 1/2	3	3 1/2	4	5	6	8	10	12
A	4 3/8	5 5/8	6 5/8	7 1/2	8 1/4	7 1/4	8 3/4	10	11 1/2	15	17 3/8
B	4 3/4	5 3/8	6 1/4	7	7 3/4	9 1/2	11	14	17	21 3/8	24
C	2	2 1/2	3	3 1/2	4	4 1/2	6	7	9	12	14
*WGT.	5 1/2	7	9	12	16	20	33	41	64	130	235

SIL BRAZED 52-25S



Reference Dimensions Inches — 52-25S

Size	1 1/2	2	2 1/2	3	3 1/2	4	5	6	8	10	12
A	4 3/8	5 5/8	6 5/8	7 1/2	8 1/4	7 1/4	8 3/4	10	11 1/2	15	17 3/8
B	4 3/4	5 3/8	6 1/4	7	7 3/4	9 1/2	11	14	17	21 3/8	24
C	2	2 1/2	3	3 1/2	4	4 1/2	6	7	9	12	14
Open	2 1/2	2 1/2	2 1/2	2 1/2	2 1/2	4 5/8	4 3/4	6 3/4	6 3/4	6 3/4	6 3/4
*WGT.	6 1/2	8 1/2	11	15 1/2	19	23	39	53	82 1/2	156	302

*APPROXIMATE