

Take A Closer Look. Your Tate Andale Strainer Could Be A Candidate For Our Rebuild Program.

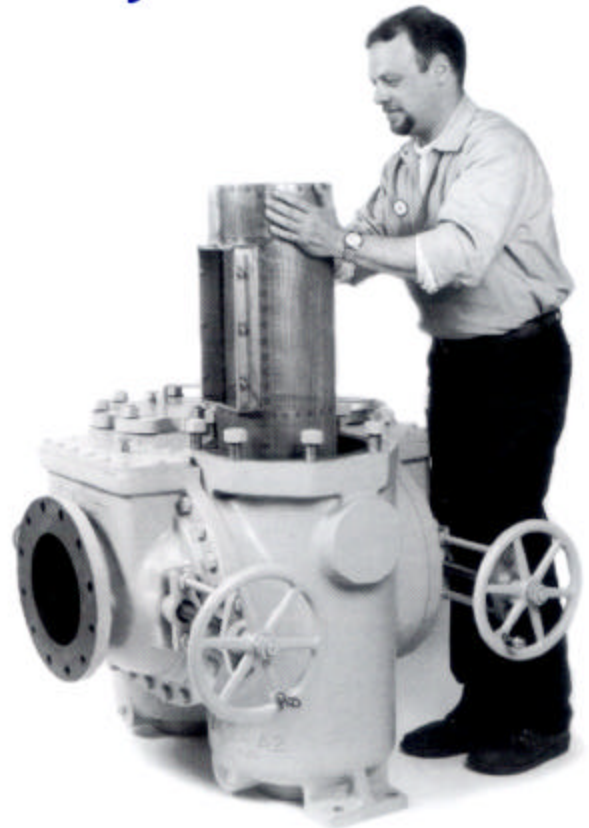
Elliott Strainers, Tate Temco And Andale Products Are Manufactured By Tate Andale.

If you have a duplex strainer that is 25 years old or older and has sound body/cover castings, we can replace the internal components allowing you many additional trouble free years of service.

Tate Andale Model AL/AH, R/S, ID and I01 twin basket strainers are known for their durable, easy to maintain, long-lasting track record. These duplex strainers are also designed so that the internal wearing parts can be replaced without having to purchase a new strainer. Many of our clients have saved thousands of dollars when compared to the cost of purchasing a new strainer. Additionally, you are assured that the unit can be reinstalled easily without expensive changes to piping and foundations. Installation changes required to accommodate a new strainer by an alternate manufacturer can be very costly and disruptive.

Some of our customers that have already realized a savings through our rebuild program include major domestic steel mills, The United States Postal Office, The United States Navy, commercial marine operators and many others.

Contact our Parts & Service Department for an estimate to rebuild your strainer. Please locate



your strainer serial number and give us a call. We can typically have an estimate to you in 24-48 hours. Call us today at 1.800.296.TATE or e-mail us at tate@tateandale.com.

 **Tate Andale**

Rebuilding Your Duplex Strainer

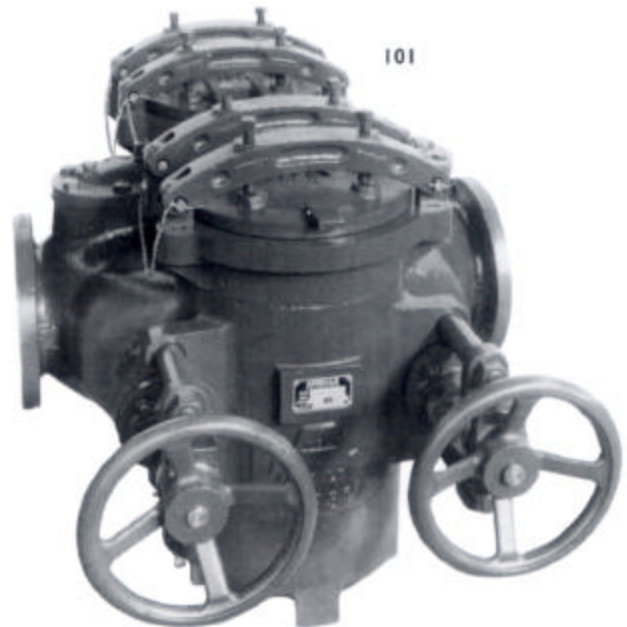
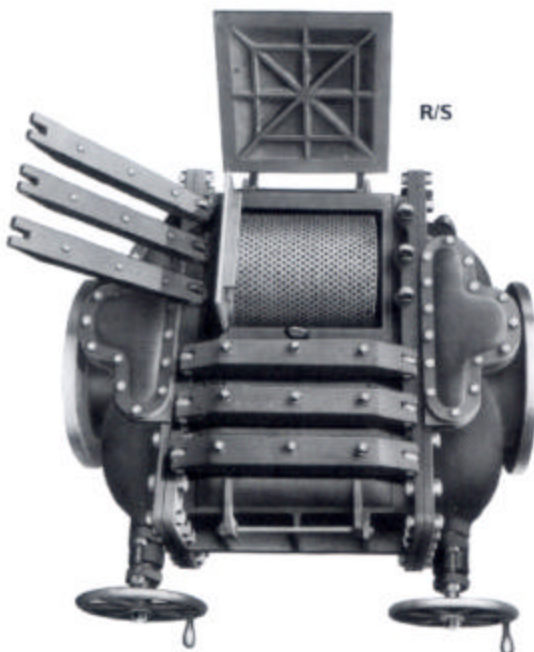
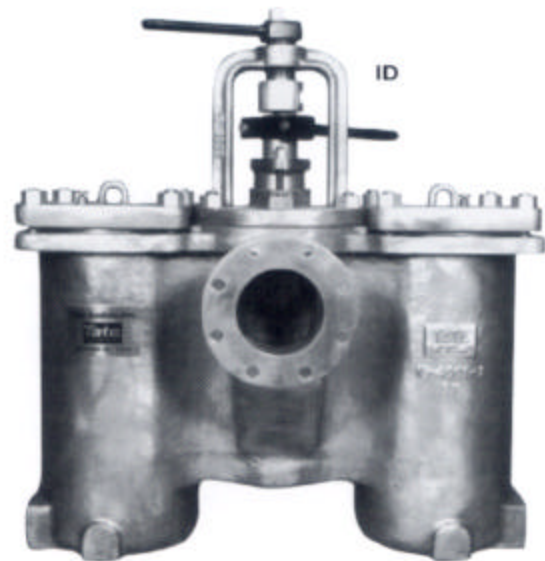
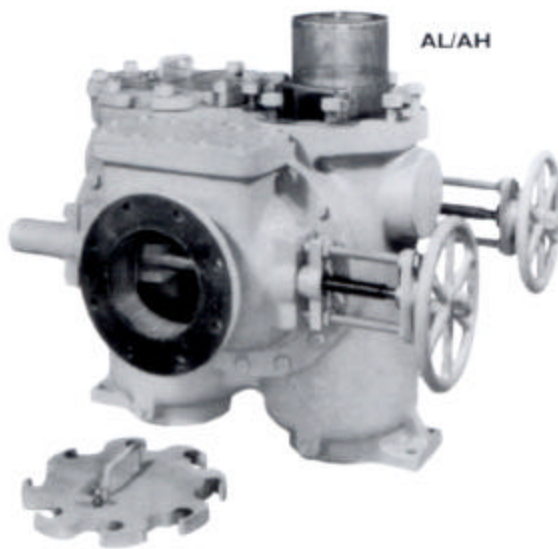
If your duplex strainer has sound body/cover castings, we can replace the internal components and significantly extend the life of your unit.

Larger duplex strainers are rebuilt in our Baltimore, Maryland facility. Our staff of skilled technicians will provide the following service:

- disassemble unit
- sandblast and inspect all castings that will be reused
- inspect all walls for corrosion and deterioration
- re-machine all sealing surfaces (if required)

- replace all internal components
- reassemble unit
- test unit to original operating conditions

For smaller strainers, it is sometimes more cost effective to rebuild the units on site due to the cost of freight to and from our Baltimore facility. You will need access to reasonable machining capabilities and qualified maintenance personnel and you may not have to take your strainer out of line. We will provide you with all new internal components and complete, detailed instructions for completing the overhaul.



Call our Parts & Service Department at 1.800.296.TATE

Tate Andale Rebuild Program

The list below details, by unit, the internal components that are replaced when your strainer is remanufactured in our Baltimore, Maryland facility.

Model AL/AH Tate Elliott Twin Basket Strainer

- All gaskets and packing
- Two new perforated baskets
- Two new cast iron discs with rubber disc rings
- Two new cast iron wedges and four new steel wedge shoes
- Two new steel valve screws
- Two new brass shaft assemblies
- All stainless steel internal hardware
- Exterior steel hardware—as required
- Two new guide base assemblies and two new packing glands
- New chain and sprockets—if original unit had chain drive

Model R/S Tate Elliott Twin Basket Strainer

- All new gaskets and packing
- Two new perforated baskets
- Two cast iron discs with rubber disc rings
- Eight brass wedge shoes
- Two brass valve screw assemblies
- All cast iron packing glands
- Two cast bronze valve nuts
- Two guide indicators, two screw plug indicators and two packing box indicators
- All interior brass and stainless steel hardware
- Exterior steel hardware—as required
- New chain and sprockets—if original unit had chain drive

Model ID Tate Andale Plug Valve Strainer

- All gaskets and packing
- Two new perforated baskets
- New plug and lifting screw
- New bearing cap and bearing
- Exterior hardware—as required

Model 101 Tate Andale Twin Basket Strainer

- All gaskets and packing
- Two new perforated baskets
- Four new seats and two new valve discs
- Two new spindles and two rear bearings
- Two new glands and packing rings—if used
- All new internal hardware
- External steel hardware—as required



Tate Andale

1941 Lansdowne Road, Baltimore, MD 21227-1789

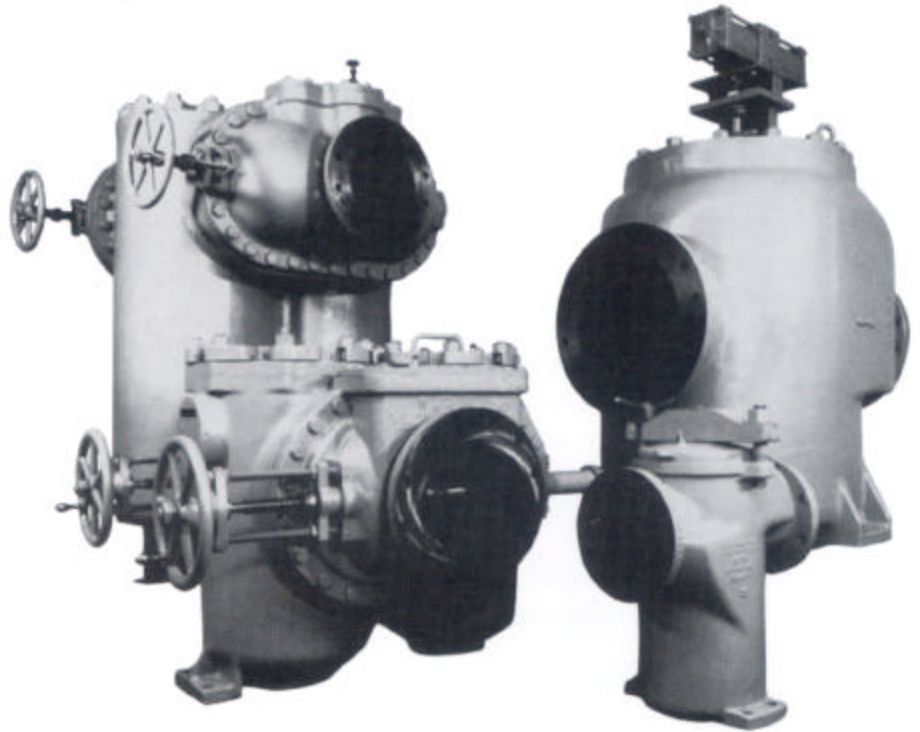
(410) 247-8700 • Fax: (410) 247-9672

www.tateandale.com

Evolution of the Name that Stands for the World's Highest Quality Strainers.

Founded in 1924, our company quickly established a reputation for extremely durable, easy-to-maintain, long-lasting strainers. We also developed a high performance line of strainers called Tate Temco. Later we acquired and began manufacturing several strainer lines that met our own high standards—Elliott and Andale. Then in 1986, we changed our name to the one we have today: Tate Andale. Today, we continue to produce Elliott, Andale and Tate Temco products to the original design specifications.

We feel the only important thing to know about the Tate Andale name is this: today we continue to make strainers with the same long-lasting qualities as those still operating 40, 50, and 60 years after being manufactured and installed. At Tate Andale, we can say with confidence: "Bring on the next 100 years."



supplier of equipment that controls the industrial fluids in power plants, petrochemical refineries, steel mills, food processing plants and other facilities where process applications are found.

With engineering and manufacturing facilities in Baltimore and Toronto, Canada, we offer a wide range of capabilities. Our capabilities range from designing and producing vent check valves, hull and drainage fittings, valves and deck drains to a sophisticated line of industrial strainers, bag filters, heat exchangers, pressure/ flow control valves, valve actuators, wedge-wire screens and other specialty industrial products.

Tate Andale is proud to have the U.S. Navy as a regular customer since the early 1900's. Our dedication to the Nuclear Navy is reflected in our customer satisfaction manufacturing which requires extreme precision, quality, and "no mistake" perfection.

Design & Manufacturing Capabilities

- Complete in-house manufacturing, machining and fabrication.
- Latest CAD/CAM design and manufacturing technology.

- Manufacturing to ASME, ANSI, ASTM and military codes and specifications.
- Welding procedures and technicians qualified to ASME and military requirements.
- A complete welding and fabrication facility including MIG, TIG, SMAW welding and plasma cutting for a variety of materials including carbon and stainless steels, monel and nickel alloys.
- Quality control conforming to ASME and military code requirements.
- Certified ASME to use the "U" & "R" symbol for construction for unfired pressure vessels in accordance with Section VIII, Division 1 of the Code.
- Hydrostatic and other non-destructive testing facilities, testing beyond what is required.
- Full range of CNC and manual production machinery and equipment.
- Lift capability of 10-tons and various material handling equipment.
- Spray painting facility.
- Prototype development in one or multiple assembled units.
- A thorough background in satisfying the requirements for government, commercial and industrial markets.

Tate Andale Today

Headquartered in Baltimore, MD, Tate Andale is the world's most diversified manufacturer of specialty pipeline equipment. We are the premier