

# Tate Andale Model 1050 Single Basket Strainer

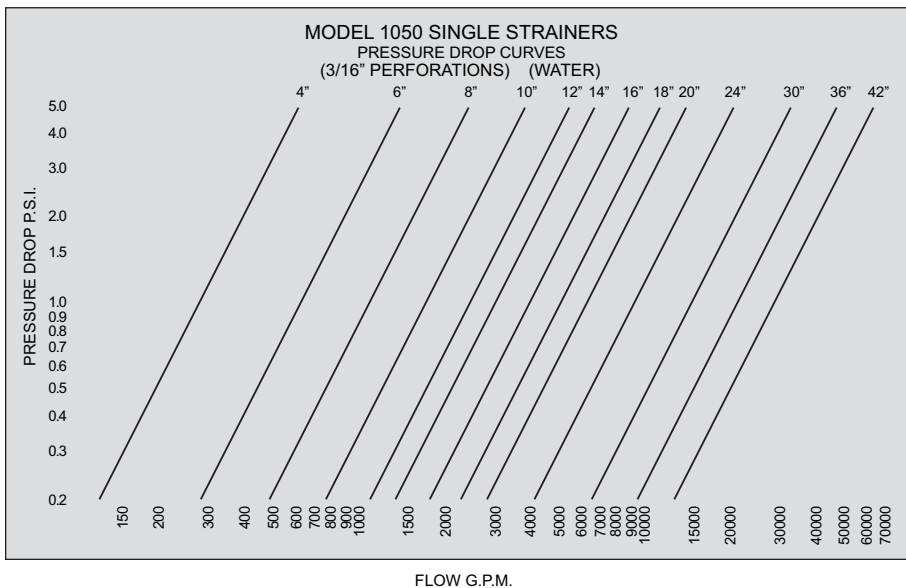
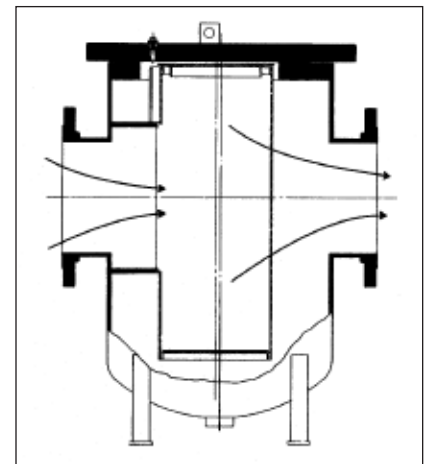


## Description

**Tate Andale Model 1050** strainers are recommended for batch operations where flow may be interrupted to clean the basket, or those installations with small amounts of debris where the strainer is used for start-up or emergency protection. **Model 1050** strainers can be supplied in sizes 4" thru 42", with fabricated steel bodies in either 150 or 300 PSIG working pressure. Higher pressure ratings are available in some sizes.

The basic design of the **Model 1050** strainer includes a flanged body containing a single side-entry perforated stainless steel plate basket. The basket can be removed for cleaning.

The side entry basket incorporates .05" clearance between the body housing and the basket frame to facilitate basket removal. While the basket can be lined with mesh liner, particles as large as .05" may by-pass the basket.



## Typical Strainer Specification

The strainer shall be a single basket type, capable of handling \_\_\_\_\_ (fluid) at a flow rate of \_\_\_\_\_ GPM with an approximate pressure drop (clean) of \_\_\_\_\_ PSIG. The strainer shall be Model 1050 as manufactured by Tate Andale, Inc. and suitable to a working pressure of \_\_\_\_\_ PSI and a working temperature of \_\_\_\_\_ °F.

The strainer body shall be of fabricated steel designed and constructed in accordance with ASME section VIII, Division I with \_\_\_\_\_" flanged inlet and outlet connections and shall have a bolted full diameter access cover.

# Tate Andale Model I050 Single Basket Strainer

The strainer access cover shall be provided with lifting eyes. The basket shall be of side-entry construction to minimize pressure drop.

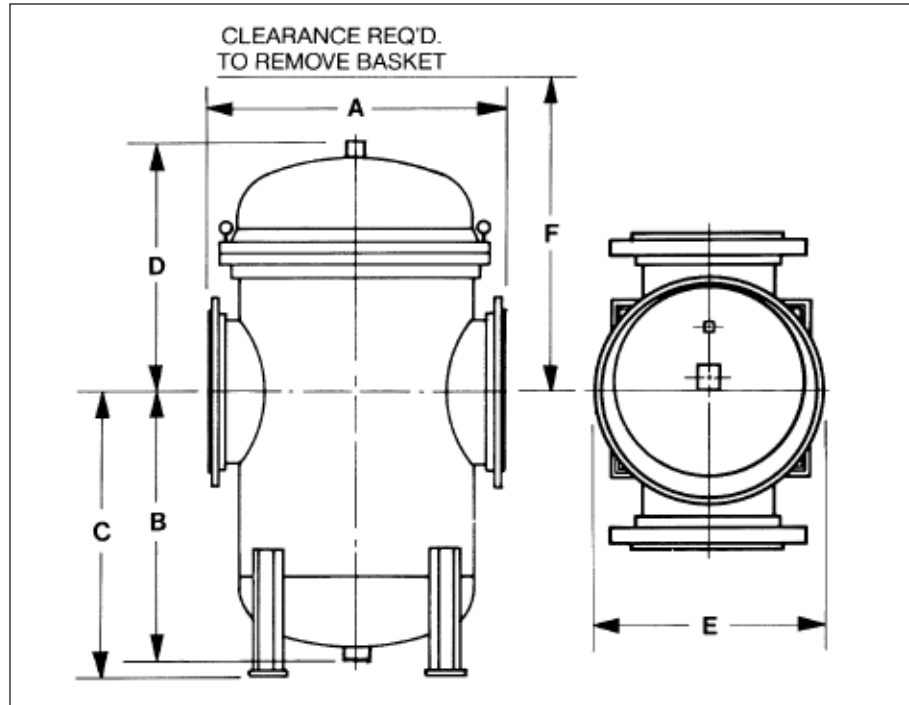
The strainer basket shall be of 304 Stainless Steel construction with \_\_\_\_\_ inch diameter perforated openings.

## Standard Materials

Body.....Steel plate  
 Access Cover.....Forged steel  
 Basket.....304 Stainless steel

## Standard Features

The body is designed and constructed in accordance with the ASME code. Body of fabricated steel design with side-entry basket to provide minimum pressure drop. The side-entry basket incorporates .05" clearance between the body housing and the basket frame to facilitate basket removal. While the basket can be lined with mesh liner, particles as large as .05" may by-pass the basket.



## Optional Features

- Wire cloth basket liner available
- Weld end inlet and outlet nozzles
- Zinc anodes for salt water service
- Magnet assemblies
- Monel or 316 Stainless Steel basket
- ASME code certification
- Higher design pressures

## Model I050 Dimensions (Approx.) 150 PSIG

SIZE (Inlet Dia.)	4"	6"	8"	10"	12"	14"	16"	18"	20"	24"	30"	36"	42"
<b>A</b>	16	18 <sup>3</sup> / <sub>4</sub>	22	28	30	36	40	44	44	52	64	70	76
<b>B</b>	9 <sup>3</sup> / <sub>6</sub>	13 <sup>3</sup> / <sub>4</sub>	17 <sup>7</sup> / <sub>8</sub>	18 <sup>7</sup> / <sub>8</sub>	21 <sup>1</sup> / <sub>6</sub>	23 <sup>3</sup> / <sub>6</sub>	25 <sup>7</sup> / <sub>6</sub>	32 <sup>3</sup> / <sub>8</sub>	32 <sup>3</sup> / <sub>8</sub>	36 <sup>3</sup> / <sub>4</sub>	46 <sup>1</sup> / <sub>16</sub>	55 <sup>5</sup> / <sub>16</sub>	64 <sup>1</sup> / <sub>8</sub>
<b>C</b>	NO SUPPORTING FEET							40 <sup>7</sup> / <sub>8</sub>	40 <sup>7</sup> / <sub>8</sub>	44 <sup>1</sup> / <sub>2</sub>	54 <sup>7</sup> / <sub>16</sub>	63 <sup>1</sup> / <sub>16</sub>	73 <sup>1</sup> / <sub>2</sub>
<b>D</b>	10 <sup>3</sup> / <sub>4</sub>	12 <sup>3</sup> / <sub>4</sub>	15 <sup>5</sup> / <sub>8</sub>	16 <sup>5</sup> / <sub>8</sub>	19	22	24 <sup>1</sup> / <sub>8</sub>	34 <sup>3</sup> / <sub>8</sub>	34 <sup>3</sup> / <sub>8</sub>	40	50 <sup>3</sup> / <sub>8</sub>	58	64 <sup>1</sup> / <sub>8</sub>
<b>E</b>	13 <sup>1</sup> / <sub>2</sub>	16	21	25	27 <sup>1</sup> / <sub>2</sub>	32	33 <sup>1</sup> / <sub>2</sub>	35 <sup>3</sup> / <sub>4</sub>	35 <sup>3</sup> / <sub>4</sub>	42 <sup>1</sup> / <sub>4</sub>	55	61 <sup>1</sup> / <sub>2</sub>	67 <sup>1</sup> / <sub>2</sub>
<b>F</b>	21	29	36	40	47	54	61	71	71	83	106	127	146
<b>Total Weight (lbs.)</b>	175	285	475	735	960	1,340	1,460	1,935	1,985	2,875	4,635	7,690	10,000

## Model I051 Dimensions (Approx.) 300 PSIG

SIZE (Inlet Dia.)	4"	6"	8"	10"	12"	14"	16"	18"	20"	24"	30"	36"	42"
<b>A</b>	20	23 <sup>1</sup> / <sub>2</sub>	31	32	34	39	41	44	44	52	68	72	78
<b>B</b>	9 <sup>3</sup> / <sub>6</sub>	13 <sup>3</sup> / <sub>4</sub>	17 <sup>7</sup> / <sub>8</sub>	18 <sup>7</sup> / <sub>8</sub>	21 <sup>1</sup> / <sub>6</sub>	23 <sup>3</sup> / <sub>8</sub>	25 <sup>1</sup> / <sub>2</sub>	32 <sup>1</sup> / <sub>2</sub>	32 <sup>1</sup> / <sub>2</sub>	36 <sup>15</sup> / <sub>16</sub>	46 <sup>7</sup> / <sub>8</sub>	55 <sup>1</sup> / <sub>2</sub>	64 <sup>3</sup> / <sub>8</sub>
<b>C</b>	NO SUPPORTING FEET							40 <sup>1</sup> / <sub>4</sub>	40 <sup>1</sup> / <sub>4</sub>	44 <sup>1</sup> / <sub>16</sub>	54 <sup>5</sup> / <sub>8</sub>	63 <sup>3</sup> / <sub>4</sub>	73 <sup>1</sup> / <sub>2</sub>
<b>D</b>	11 <sup>1</sup> / <sub>4</sub>	13 <sup>1</sup> / <sub>2</sub>	15 <sup>5</sup> / <sub>8</sub>	17 <sup>7</sup> / <sub>8</sub>	19 <sup>7</sup> / <sub>8</sub>	22 <sup>1</sup> / <sub>8</sub>	25 <sup>3</sup> / <sub>4</sub>	36 <sup>1</sup> / <sub>8</sub>	36 <sup>1</sup> / <sub>8</sub>	42 <sup>3</sup> / <sub>16</sub>	53 <sup>3</sup> / <sub>8</sub>	60 <sup>1</sup> / <sub>2</sub>	67
<b>E</b>	15	17 <sup>1</sup> / <sub>2</sub>	23	28	30 <sup>1</sup> / <sub>2</sub>	36	34 <sup>3</sup> / <sub>4</sub>	37	37	43 <sup>3</sup> / <sub>4</sub>	56 <sup>3</sup> / <sub>4</sub>	63 <sup>1</sup> / <sub>2</sub>	69 <sup>1</sup> / <sub>2</sub>
<b>F</b>	21	29	36	40	47	54	61	71	71	83	109	127	146
<b>Total Weight (lbs.)</b>	255	420	720	1,180	1,480	2,180	2,380	2,860	2,925	4,680	7,960	11,225	15,300