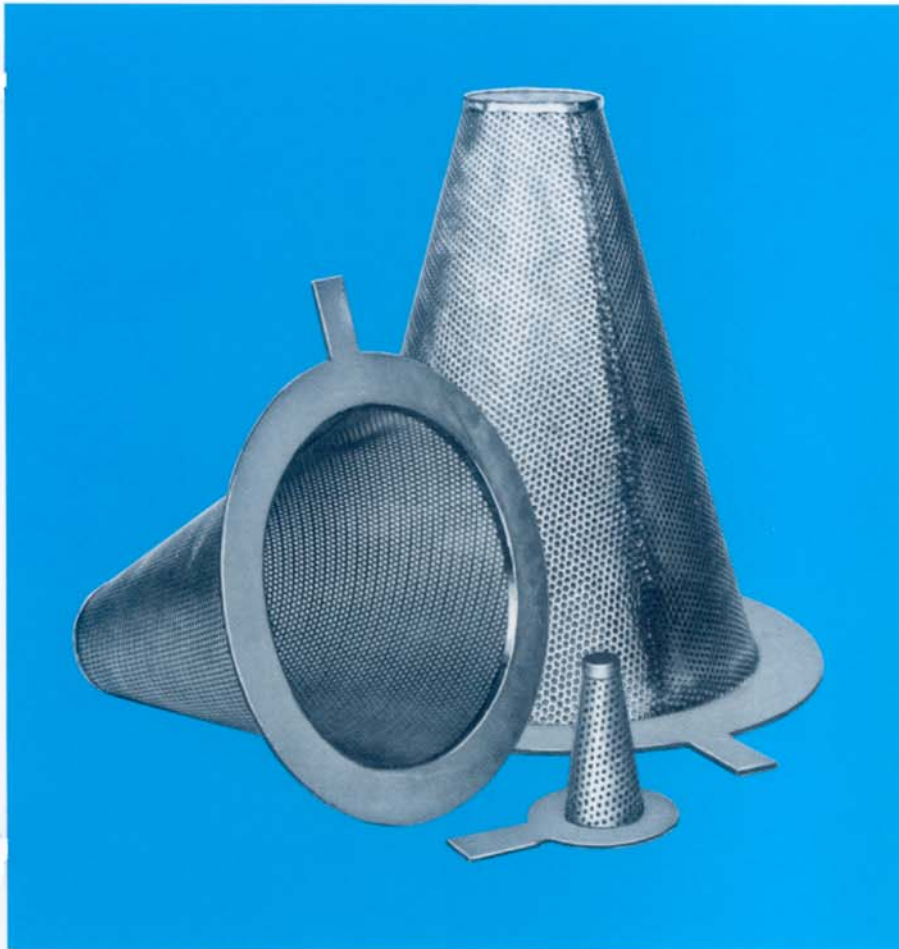


Tate Andale Model 1098 Cone Strainer



Description

Tate Andale Model 1098 Cone Strainers are recommended for start up or temporary operations.

The 1098 can be supplied in sizes 1½" through 36" and designed to fit schedules 40 and 80 pipe, and include an identification tab.

Typical Strainer Specification

The strainer shall be a cone type capable of handling _____ (fluid) at a flow rate of _____ (GPM) with an approximate pressure drop (clean) of _____ PSIG. The strainer shall be Model 1098 as manufactured by Tate Andale, Inc. and designed to fit between (2) _____" size _____ #ANSI flanged connections. The strainer shall include identification tab and shall be of 304 stainless steel construction with _____ inch diameter perforated openings (or a _____ mesh liner).

Standard Materials

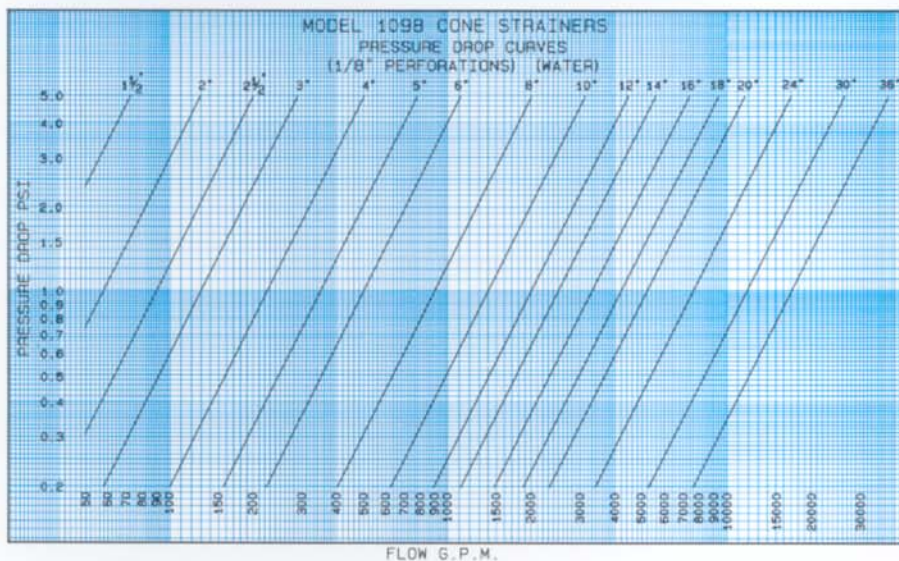
All 304 Stainless Steel

Standard Features

- Identification Tab
- 1/8" Perforations

Optional Features

- Monel or 316 Stainless Steel
- Wire cloth liner



Approximate Dimensions

FLANGE SIZE-LBS	A	B	C	D	E	H	Y* OPEN AREA
1½ -150	2¾	3¼	1¾	¾	¾	1½	2.28
2 -150	3¾	4	1¾	¾	¾	2	3.56
2½ -150	4¾	4¾	2¼	¾	¾	2½	6.2
3 -150	5½	5¼	2¾	¾	1	3	10.1
4 -150	7	6¾	3¾	¾	1½	4	17.86
5 -150	8¼	7¾	4¾	¾	2	5	27.92
6 -150	9¾	8¾	5¾	¾	2½	6	40.7
8 -150	12½	10¾	7½	¾	3½	7¾	68.5
10-150	15½	13¼	8¾	¾	3¾	9¾	111.2
12-150	17	16	11	¼	2	11½	113
14-150	19	17¾	12¾	¼	2½	13¾	152.8
16-150	21½	20¾	14¾	¼	3¼	15¾	201.5
18-150	23¾	21½	16¾	¼	4½	17¾	261
20-150	23	23¾	18½	¼	6½	19¾	297
24-150	27¾	28¾	21¾	¼	6¾	22	414
30-150	32	34½	28	¼	9	28¾	660
36-150	40½	41¾	34	¼	12	34¾	960

3 -300	5½	5¾	2¾	¾	1	3	10.1
4 -300	7	6¾	3¾	¾	1½	4	17.86
5 -300	8¼	8¼	4¾	¾	2	5	27.92
6 -300	9¾	9¾	5¾	¾	2½	6	40.7
8 -300	12½	11¾	7½	¾	3½	7¾	68.5
10-300	15½	14	8¾	¾	3¾	9¾	111.2
12-300	17	16¾	11	¼	2	11½	113
14-300	19	18¾	12¾	¼	2½	13¾	152.8
16-300	21½	21	14¾	¼	3¼	15¾	201.5
18-300	23¾	23¾	16¾	¼	4½	17¾	261
20-300	23	25½	18½	¼	6½	18¾	297
24-300	27¾	30½	21¾	¼	6¾	22	414
30-300	32	37¾	28	¼	9	28¾	660
36-300	40½	43¾	34	¼	12	34¾	960

FLANGE SIZE-LBS	A	B	C	D	E	H	Y* OPEN AREA
3 -600	5½	5¾	2¾	¾	1	3	10.1
4 -600	7	7½	3¾	¾	1½	4	17.86
5 -600	8¼	9¾	4¾	¾	2	5	27.92
6 -600	9¾	10¾	5¾	¾	2½	6	40.7
8 -600	12½	12½	7½	¾	3½	7¾	68.5
10-600	15½	15½	8¾	¾	3¾	9¾	107.2
12-600	17	17¾	11	¼	2	11½	113
14-600	19	19¼	12¾	¼	2½	13	152.8
16-600	21½	22¾	14¾	¼	3¼	15	201.5
18-600	23¾	24	16¾	¼	4½	17	261
20-600	23	26¾	18½	¼	6½	18¾	297
24-600	27¾	31	21¾	¼	6¾	22	414

3 -900	5½	6½	2¾	¾	1	2¾	9.3
4 -900	7	8	3¾	¾	1½	3¾	16.4
5 -900	8¼	9¾	4¾	¾	2	4¾	25.75
6 -900	9¾	11¼	5¾	¾	2½	5¾	38.6
8 -900	12½	14	7½	¾	3½	7½	66.48
10-900	15½	17	9	¾	3¾	9¾	102
12-900	17	19½	10¾	¼	2	11½	112.6
14-900	19	20¾	11¾	¼	2½	12¼	143.1
16-900	21½	22½	13¾	¼	3½	14¾	190.5
18-900	23¾	24¾	15½	¼	4½	15¾	243.2

*BASED ON 40% OPEN AREA OF SCREEN

